

### Kennebunk Land Trust Welcomes You

Kennebunk Land Trust (KLT) was established in 1972. Since 1972, KLT has protected over 3,400 acres of land through ownership, conservation easement and partnership. These properties include upland forest, coastal marsh and agricultural fields, and many of them are open for recreational enjoyment.

Those preserves open for public access are clearly identified, as are those with trails. Kennebunk Land Trust's mission is to permanently conserve and steward land to benefit natural and human communities.

Publication of this map was made possible through the generosity of the Davis Conservation Foundation, Map and Guide designed by Schumacher Creative Design with GIS mapping help from Sue Blockford of the Wells National Estuarine Research Reserve.



Kennebunk Land Trust

PROPERTY AND TRAIL MAP



Kennebunk Land Trust

PROPERTY AND TRAIL MAP

### TRAIL ETIQUETTE:

**Daylight Use Only**  
**No Fires, Camping, or Motorized Vehicles on any KLT property**

Hunting is by permission only. Contact KLT for details.  
**Carry in - Carry out**  
Trails do not have trash cans or bathroom facilities. "Leave no trace."

**Dogs**  
Dogs are welcome on KLT properties. Responsible dog owners must please pick up and remove from trails. No off-leash dogs. No off-leash dogs are dog lovers. Leash dogs when approaching others.

**Mountain Biking**  
While allowed on some KLT trails, we ask that you consider surface conditions before riding to prevent rutting and trail damage. Off-trail riding and unsafe riding will not be tolerated. Riders must be sensitive to other users.

**Habitat**  
Please do not remove any vegetation or wildlife. Be respectful.

**Monitoring**  
KLT volunteers monitor and maintain the trails. Should you find downed trees, vandalism, or inappropriate uses on any part of the preserves or trails, please contact the Trust.

**Parking**  
Trails with designated parking are noted in the text. When you visit the preserves without designated parking spaces, please be sure to park legally and be respectful of neighborhood properties.

**Safety**  
We prepare you enjoy the trails. Hikers should be prepared for inclement weather with appropriate clothing. If you have any medical conditions, please let us know. We have clear ticks that carry Lyme disease. Hikers should always perform "tick checks" on themselves and pets following a trip into the woods.

Users of this map bear full responsibility for their safety. KLT is in no way responsible for personal injury, damage to property or violation of the law in connection with the use of this map.

ACTIVITIES	LEGEND
Hiking/Walking	
Birding	
Binding	
Dogs Allowed	
Benches	
Fishing	
Acquity Sking	
Snowshoeing	

**Volunteer at KLT**  
KLT needs its trails to be in the best possible condition. Every year there is work to be done to maintain the trails. Bridge repair, brush cutting and blading are some of the jobs that require volunteer attention. Generally, this work is done in the spring, summer and fall seasons. If you are interested in joining our amazing team or if you have any questions, please contact Kennebunk Land Trust.

**Special Events**  
Each year KLT sponsors special events to thank our supporters. To introduce and to showcase trail properties, we need volunteers to make these events successful. If you'd like to be part of the team, please contact us.

**Kennebunk Land Trust**  
6 Brown Street, Suite 2 • Kennebunk, Maine 04853  
207.265.2534 • [kennebundlandtrustinfo@gmail.com](mailto:kennebundlandtrustinfo@gmail.com)  
[www.kennebundlandtrust.org](http://www.kennebundlandtrust.org)

**Kennebunk Plains Wildlife Management Area**  
KLT is a partner in the protection of this landscape-scale, 2,000-acre property. Now managed by The Nature Conservancy, this preserve offers outstanding opportunities for recreation and observation. Formerly a private property, it is now open to the public. It features unique and rare species of birds, reptiles and plants. Maine's largest flock of endangered Grasshopper Sparrows live here, as does the rare Black Racer Blazing Star, a threatened flowering plant, blooms here in August and September.  
Access is from Route 99. Parking is available at the 3 miles of gravel road. **EASY**



**Alewife Woods**  
The crown jewel of KLT properties, this preserve boasts over 625 acres of land and a 45-acre pond. The forested scrub pine parcel provides habitat to a variety of wildlife. Trails meander through a red pine plantation that was re-vegetated after the fires of 1947. Originally planned as a second phase of Alewife Farms residential development, the property was conserved by the Trust in 1990. **1.5 miles west of Interstate 95. Parking is available at the trailhead. 2.5 miles of trail. EASY TO MODERATE**

**Clark Preserve**  
A forested 90-acre tract, this preserve has over 2,000 feet of frontage along Kennebunk River. Adjacent to the Eastern Trail, the wildlife on this property is abundant; moose, deer, black bear and fox have been seen along with numerous bird species including Great Gray and Northern Saw-wet Owl, warblers and more.  
Access is from the Eastern Trail. Parking available at Kennebunk Elementary School.  
**75 miles of trail one way. EASY**  
Combine with ET for an extended trail length



**Mousam River Wildlife Sanctuary**  
Located in the center of Kennebunk, the 38-acre preserve has over 2,400 feet of frontage along the Mousam River and is convenient to the downtown area. Following a mildly steep initial ascent, the trail levels and winds through mixed forest on a trail bed composed of blue bluish-gray granite. That overlooks a broad estuary where the Mousam River becomes tidal, there is another overlook at the end of the trail. The sanctuary is an ideal location to observe waterfowl. Warblers are abundant during migration. Off street parking is located on the left, directly after the Sewer District Administrative Building. The trailhead is approximately 700 feet further ahead on the left.  
**75 miles one way to trails south end. EASY TO MODERATE**

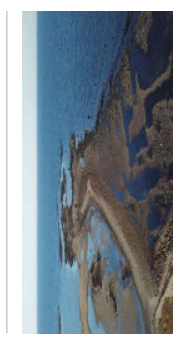


**Sea Road Preserve / Madelyn Marx**  
This short, .25-mile Sea Road trail sits on a 13-acre property. This is contiguous to the town-owned Bridle Path and Rachel Carson National Wildlife Refuge. After the town purchased the property, the town and KLT founded the 2+/- acre Madelyn Marx Preserve (named after KLT founder). Combined, this trail is 3-miles one way. The trail follows an old, turn-of-the-century trolley bed and offers scenic views of the Mousam River. The trail has forested sections as well as thick low brush. Many coastal birds, waterfowl, bald eagles, and occasional seals can be spotted. This is a popular trail. **2.5 mile one way. Sea Road / .4 mile one way Madelyn Marx / 3 miles one way if combined with Bridle Path. EASY**

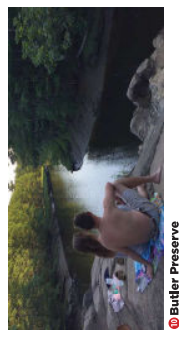


**Weilder Brook Preserve / Murphy Preserve**  
A forested 100-acre preserve, this property is owned and two Trust-owned properties totaling nearly 90 acres. The trail threads through upland forest and fern beds and crosses a brook and streams leading to the banks of the Kennebunk River near the head of tide. This quiet preserve is a picturesque oasis. Noted birds: Pileated Woodpecker and warblers are abundant. **1.5 mile east of downtown Kennebunk at the end of Plummer Lane. Parking is available at the trailhead. Information kiosk on site. 2.5 miles of trail. MODERATE**

**The Secret Garden**  
Near quiet and beauty not far from town. Providing significant wildlife and water protection, the area serves as a boggy filler for the Lake Brook watershed. The .15 mile trail weaves through forest, extensive fern beds, and bog areas with beaver activity present. Please visit KLT website for access information.  
**15 mile trail loop. EASY TO MODERATE**

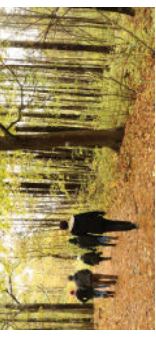


**Strawberry Island**  
This trail is accessible only at low-tide. In the 1940's, Strawberry Island was home to a working farm with farmhouse and barn. Today it is a pile of rocks and completely submerged at high tide. It was one of the first KLT acquisitions.  
Located off of Great Hill Road. **MODERATE**

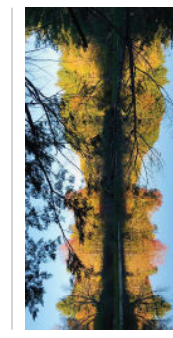


**Butler Preserve**  
A little gem of a walk just off Route 35, the trail leads to a global boulder known as Plinic Rock and the banks of the Kennebunk River. In earlier times, Plinic Rock was a well-known spot where boaters (travelling back and forth to the island) would stop to enjoy the view. The trail is enjoyed by people of all ages as a stop on a kayak excursion or a hike.  
Access is from Old Port Road near the corner of Rivers Edge Drive. Parking is limited.  
**75 mile of trail out and back. EASY**

**For All Forever Preserve**  
The 18-acre property contains a flawless forest, wetland areas, fields, and a mile of frontage on the Mousam River. The property is located on Webber Hill Road (Rt. 99) across from the intersection of Rt. 99 and Wakefield Road. Off street parking is available at the site.  
**11 miles of trail. EASY TO MODERATE**



**Hope Woods**  
This property is 70 acres of forest and field located just off Route 1 / Main Street in Kennebunk, behind Hope Cemetery. Hope Woods represents pristine open space just steps away from the village center! It's a perfect spot to explore in all seasons. The property contains about 2 miles of well-marked trails. Hope Woods was held by KLT in 2017 through a purchase agreement with the town of Kennebunk. Access from four points: Barnard Lane (at the back of Hope Cemetery), Wood Pond Lane (in the cur-de-sac), Fletcher Street (across from Mechanic Street), and Woodhaven Drive (near the intersection with Wood Pond Lane). Signs are at the trail heads.  
**2 miles of trails. EASY TO MODERATE**



**Oxbow**  
The Oxbow Preserve is comprised of 14 acres and is located on the banks of the Mousam River. It's about a 1/2 mile of river frontage. The walk provides a great opportunity to learn more about animals and trees in a mixed conifer forest. The Preserve is located on Spiller Drive off of Cat Mousam Road in Kennebunk. Parking is available at the trailhead.  
**9 mile loop. EASY TO MODERATE**

Please credit: Scott Gasparin, Brooke Larrabee, Beth and Dave Sandmire

**Join KLT!**  
The strength of the Kennebunk Land Trust is in its membership. Through your interest and financial support, you can make a significant difference in the preservation of important natural areas in the Kennebunk area.  
There are many levels of membership for individuals and businesses. KLT is a 501(c)(3) organization so your gift is tax deductible to the extent allowed by law.

All members receive:  
■ Kennebunk Land Trust decal  
■ A subscription to Land Legacy, the KLT newsletter  
■ Invitations to special events and the annual KLT meeting  
Join us in protecting the natural beauty of our Southern Maine home.



To become a member, fill out the form below or go to our website and join online at [www.kennebundlandtrust.org](http://www.kennebundlandtrust.org).

1. Tear away at perforation
2. Fill out membership form
3. Add check or credit card information
4. Insert membership form in envelope
5. Seal envelope, add stamp, and mail

Name (S): \_\_\_\_\_  
Helling Address: \_\_\_\_\_  
City: \_\_\_\_\_  
State: \_\_\_\_\_ Zip: \_\_\_\_\_  
Telephone: \_\_\_\_\_  
Email: \_\_\_\_\_

Business Membership:  
 \$1000 Benefactor  
 \$500 Sponsor  
 \$250 Advocate  
 \$100 Friend  
 \$50 Patron  
 Other \$ \_\_\_\_\_

Individual Membership:  
 \$1000 Benefactor  
 \$500 Sponsor  
 \$250 Advocate  
 \$100 Friend  
 \$50 Patron  
 Other \$ \_\_\_\_\_

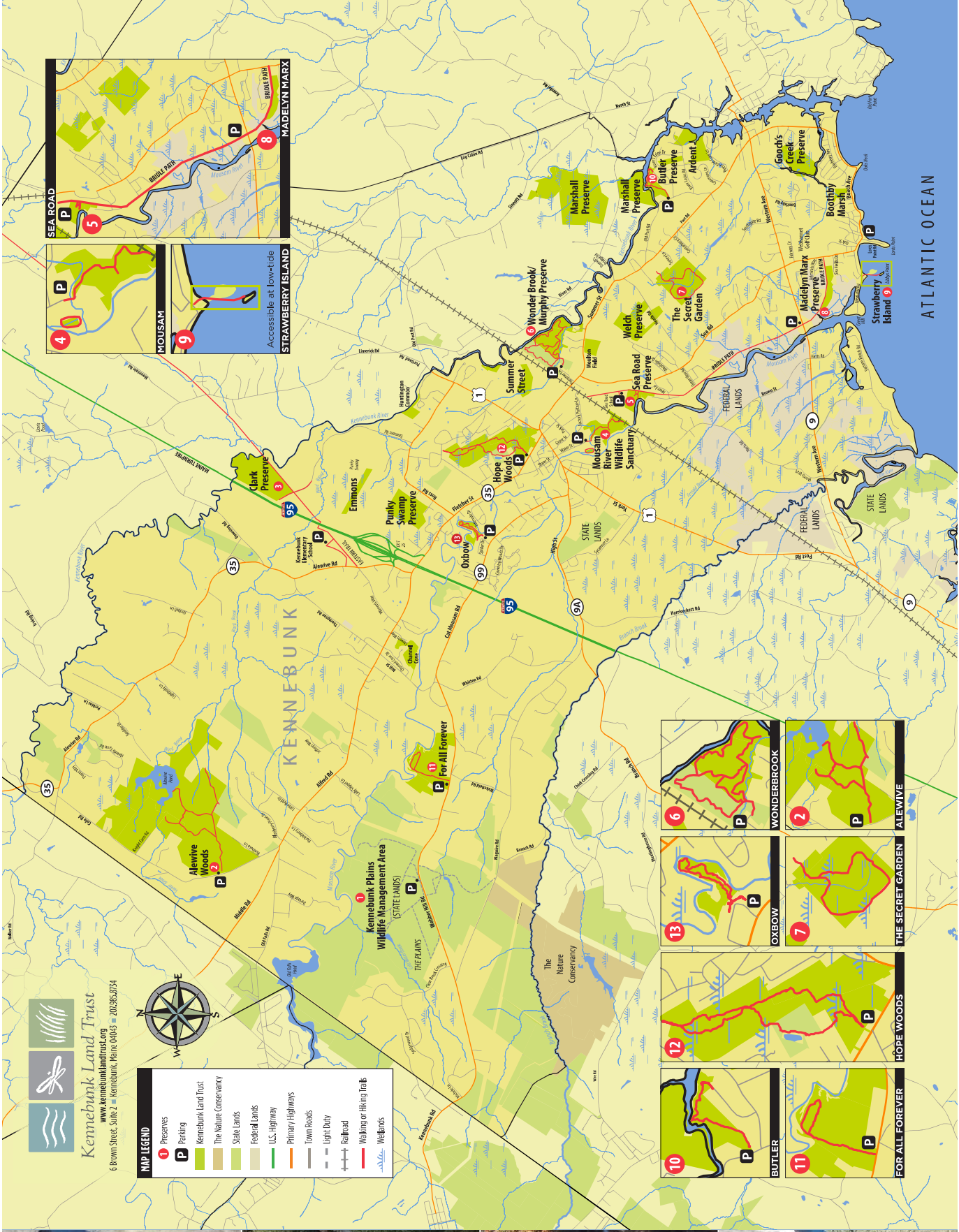
My company offers a matching gift program.  
Please call me about opportunities for estate planning, bequests, or memorial gifts.  
I would like to be a volunteer.

My check is enclosed.  
 Please charge my credit card:  
 Amex  Discover  MC  Visa  
Account #: \_\_\_\_\_  
Expiration date: \_\_\_\_\_ (V/C)  
Signature: \_\_\_\_\_

KLT is a 501(c)(3) organization. Gifts are tax deductible to the extent allowed by law.  
**Thank you for your generous support!**



For All Forever



**Kennebunk Land Trust**  
[www.kennebunklandtrust.org](http://www.kennebunklandtrust.org)  
 6 Brown Street, Suite 2 • Kennebunk, Maine 04043 • 207.935.3754